

Town of Nantucket COVID-19 Beach Guidelines

As of June 11, 2020

Subject to Change



Greetings! Effective as of June 11, 2020, the Town of Nantucket has developed a plan in compliance with state guidelines for beaches open to the public as follows:

Face Coverings and Masks

All beach visitors shall comply with Massachusetts *COVID-19 Order 31: Order Requiring Face Coverings in Public Places Where Social Distancing is Not Possible*. The order requires any person over the age of 2, whether indoors or outdoors, to wear a face covering or mask when they cannot maintain 6 feet of distance between themselves and others, unless they have a medical condition preventing them from doing so. See further guidance [here](#).

- Masks **ARE NOT** required to be worn (and should not be) while swimming.

Group Size

Per Massachusetts *COVID-19 Order 13: Order Prohibiting Gatherings of More Than 10 People*, no groups larger than 10 are allowed to gather. See complete Order 13 [here](#).

- To allow for adequate social distancing for ingress, egress, and transit across the beach, beach capacity must accommodate a minimum of 12 feet distance between towelings/beach blanket groups.

User Guidelines

- Beach visitors are required to maintain social distancing of at least 6 feet or more at all times and visitors should maintain at least 12 feet minimum distance between towelings/beach blanket areas.
- Organized ball games and activities including, but not limited to, volleyball, Kan Jam, spikeball, football, soccer are not allowed. NON-contact, unorganized games such as catch and Kadima, are allowed with social distancing.
- Beach visitors shall abide by social distancing standards for bathroom lines and follow any established visual guidelines for maintaining a 6' distance in all restroom facilities.
- A minimum distance of 6 feet shall be maintained between lifeguards and between the public and lifeguard stands unless in the case of an emergency.
- Nantucket Lifeguards will post zone markers to maintain a 6-foot distance on all sides of the stand.

Over Sand Vehicle (OSV) Beaches

Vehicle capacity for beaches where driving is allowed will be calculated by the Harbormaster's Office based State guidelines, public beach area and high tide mark. *Capacity levels as indicated below are subject to changing beach conditions, including tides, erosion and required endangered species protection measures – the numbers indicated below will change pending these conditions.*

Signage at each OSV beach will indicate allowable capacity levels as well as when capacity has been reached. Nantucket Police Department ATV patrols will advise and/or assist as necessary. Beach vehicle capacities will be added to each daily beach report issued by the Harbormaster's Office on the [Nantucket Harbormaster Instagram](#) and [Twitter](#) accounts (@ACKHarbormaster). These are updated daily as conditions change. Additional information on beach closures due to birds, erosion and other restrictions can be found on the [Beach Closure Report](#) on the Town's website. If OSV capacity is reached, vehicles will be turned away.

Social Distance Space Needed for OSV

- 10 feet on either side of the vehicle + 8 feet for vehicle width = 28 feet per vehicle.

Capacity Levels by Beach

**NOTE: Again, these capacity numbers are subject to changing conditions on a daily basis*

- **Nobadeer Beach:**

Total Allowable Space for Vehicles: 1,431.76 feet

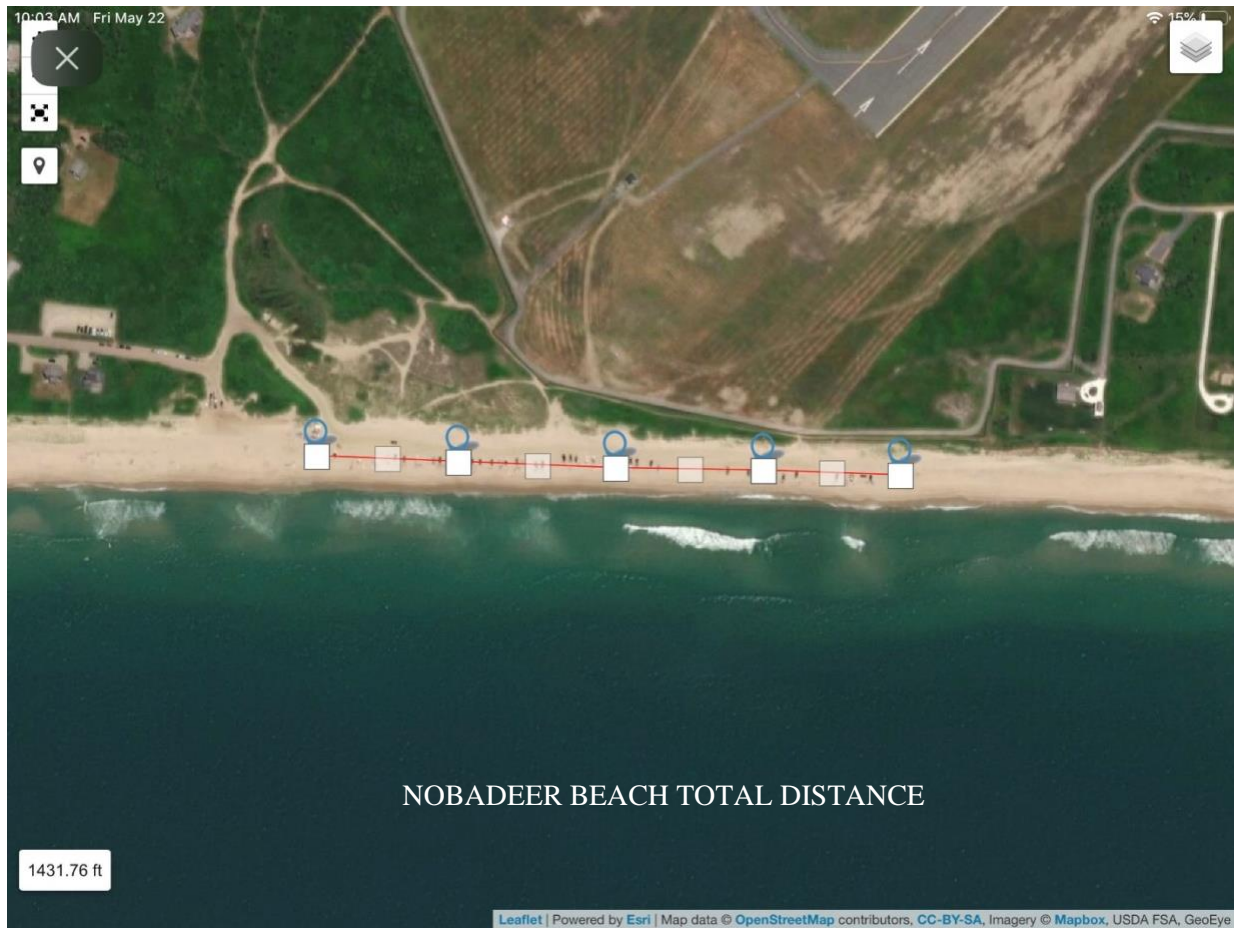
Total Distance from Base of Dune to High Tide Mark: Varies between 40ft-70ft

- With One Row of Vehicles: 28 feet per vehicle = **51 vehicles**

Total Vehicles in One Row: 51 Vehicles

- With Two Rows (if beach conditions allow) of Vehicles: $51 \times 2 =$ **102 vehicles**

Total Vehicles in Two Rows on Nobadeer: 102 Vehicles





- **40th Pole:**

Total Allowable Space for Vehicles: 1,046.88 feet

- With One Row of Vehicles: 28 feet per vehicle = **37 vehicles**

Total Vehicles in One Row: 37 Vehicles

- With Two Rows (if beach conditions allow) of Vehicles: $37 \times 2 =$ **74 vehicles**

Total Vehicles in Two Rows on 40th Pole: 74 Vehicles



- **Eel Point:**

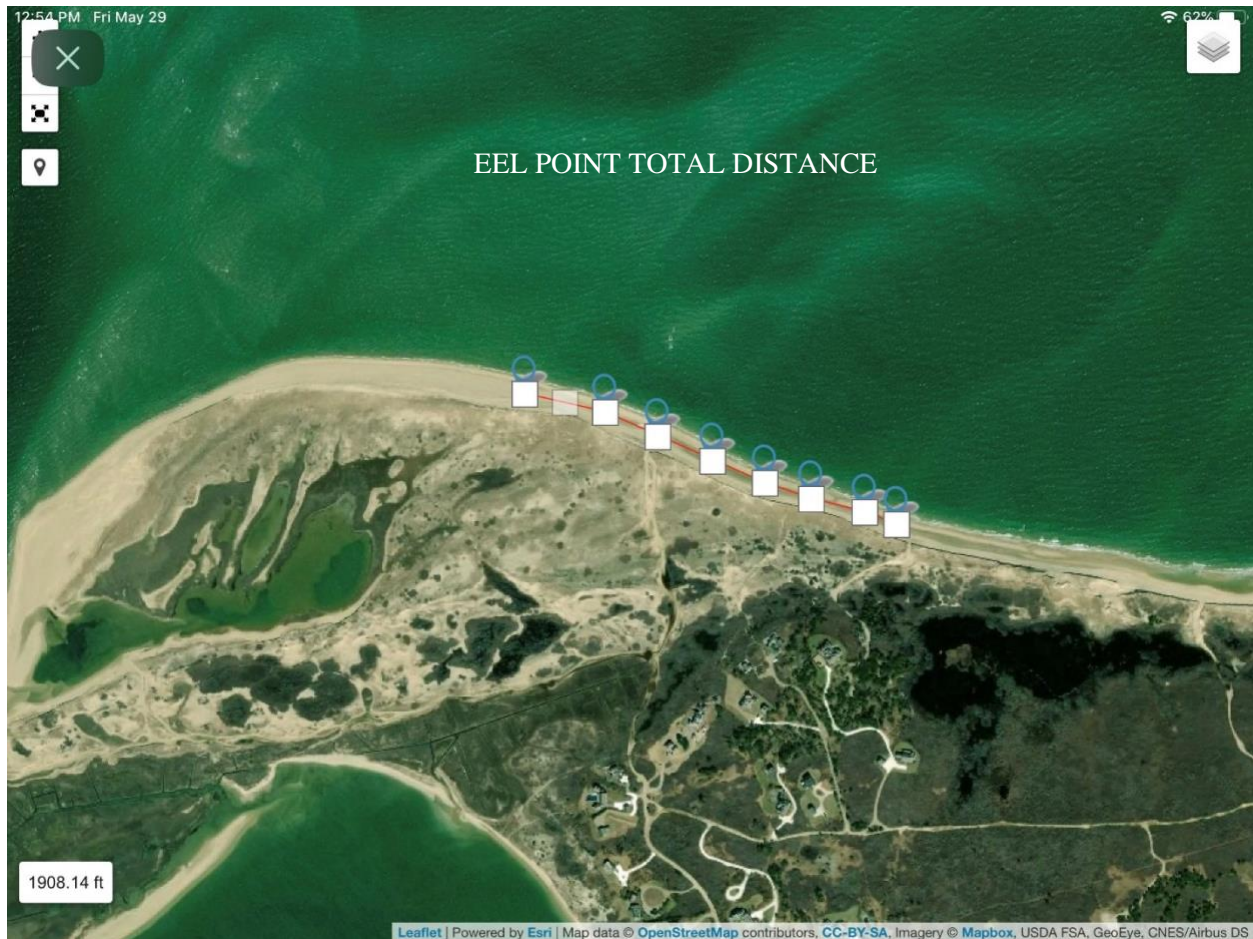
Total Allowable Space for Vehicles: 1,908.14 feet

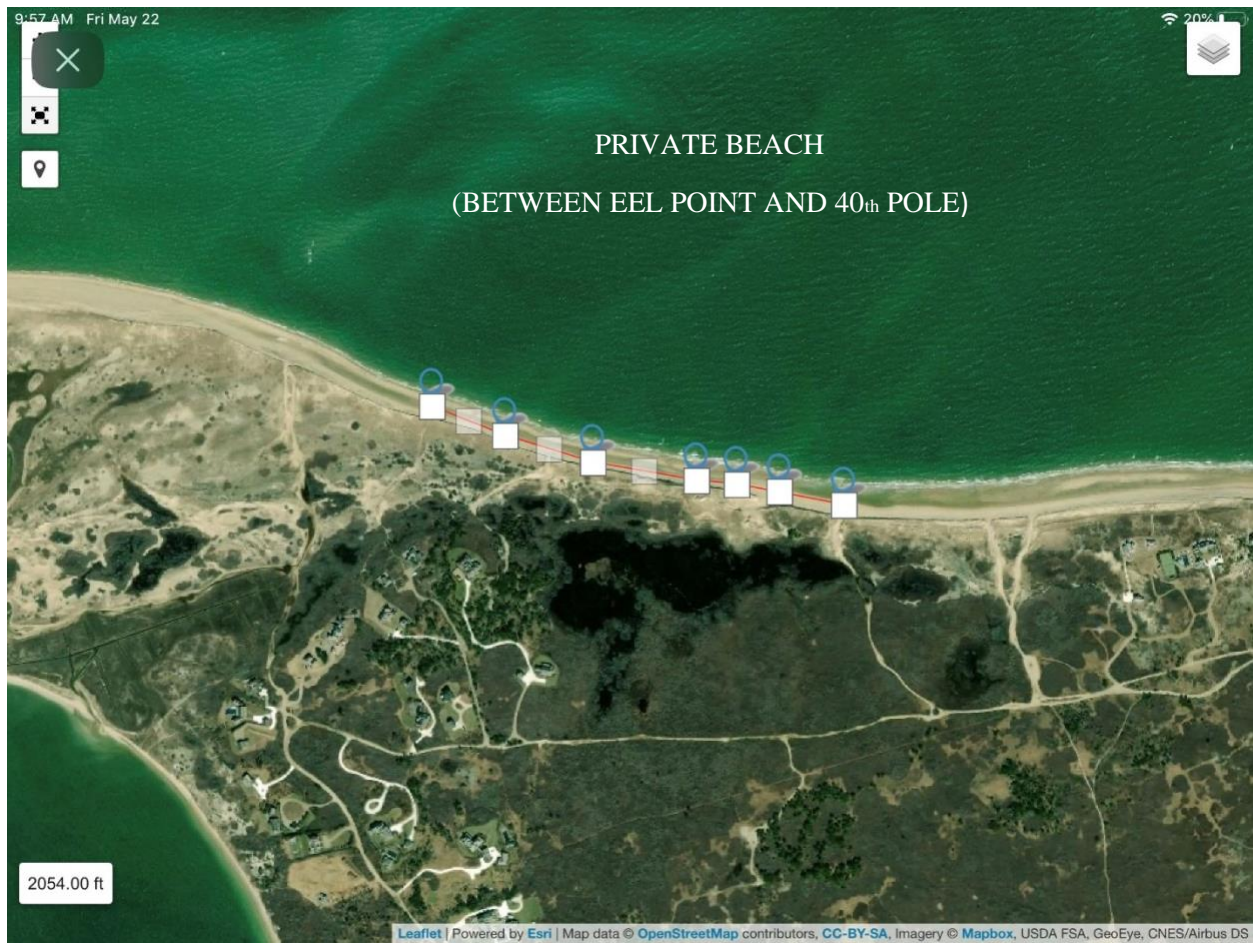
- With One Row of Vehicles: 28 feet per vehicle = **68 Vehicles**

Total Vehicles in One Row on Eel Point: 68 Vehicles

- With Two Rows (if beach conditions allow) of Vehicles: 28 feet per vehicle =
 $68 \times 2 = 136$ Vehicles

Total Vehicles in Two Rows on Eel Point: 136 Vehicles





- **Smith's Point**

**SUBJECT TO CLOSING DUE TO EROSION CONDITIONS AND
ENDANGERED SPECIES**

Information on beach closures due to birds, erosion and other restrictions can be found on the [Beach Closure Report](#) on the Town's website.

Total Allowable Space for Vehicles: 7,846 feet

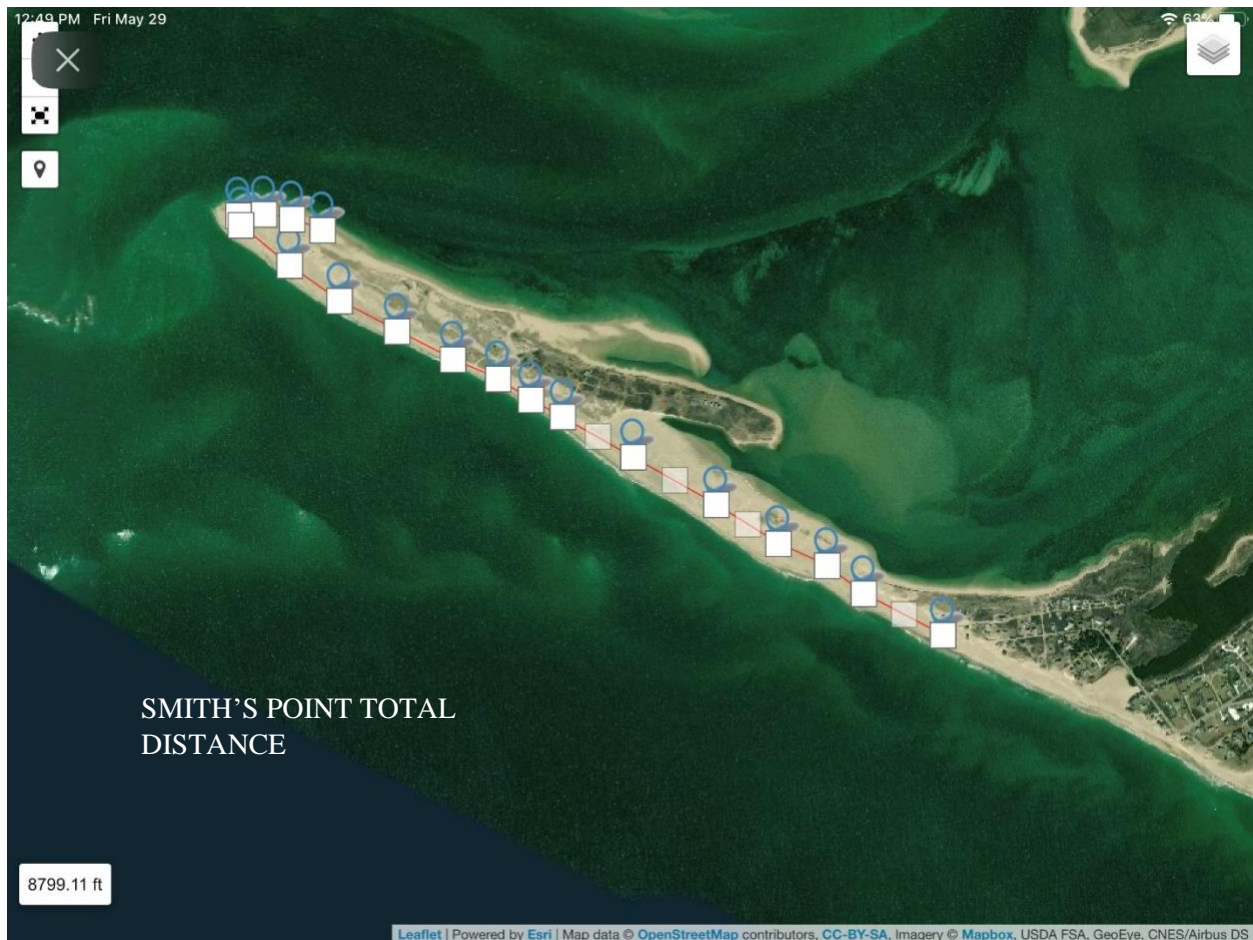
- With One Row of Vehicles: 28 feet per vehicle = **280 Vehicles**

Total Vehicles in One Row on Smith's Point: 280 Vehicles

- With Two Rows (if beach conditions allow) of Vehicles: 28 feet per vehicle =
280 x 2 rows = **560 vehicles**

- Parking on the harborside is not permitted

Total Vehicles in Two Rows on Smith's Point: 560 Vehicles



- **Sewer Beds**

**SUBJECT TO OPENING DUE TO EROSION CONDITIONS AND
ENDANGERED SPECIES**

Information on beach closures due to birds, erosion and other restrictions can be found on the [Beach Closure Report](#) on the Town's website.

Total Allowable Space for Vehicles: 1,365 feet

- With One Row of Vehicles: 28 feet = **48 vehicles**

Total Vehicles in One Row on Sewer Beds: 48 Vehicles

- With Two Rows (if beach conditions allow) of Vehicles: 28 feet = 48. x 2 =
97 Vehicles

Total Vehicles in Two Rows on Sewer Beds: 97 Vehicles



- **Low Beach**

CAUTION: DRIVING CONDITIONS TO THE NORTH ARE EXTREMELY DIFFICULT IN THIS AREA AND DUE TO EROSION AND ENDANGERED SPECIES, CONDITIONS ARE SUBJECT TO CHANGE

Information on beach closures due to birds, erosion and other restrictions can be found on the [Beach Closure Report](#) on the Town's website.

Total Allowable Space for Vehicles: 617 feet

- With One Row of Vehicles: 28 feet = **22 Vehicles**

Total Vehicles in One Row on Low Beach: 22 Vehicles

- With Two Rows (if beach conditions allow) of Vehicles: $22 \times 2 =$ **44 Vehicles**

Total Vehicles in Two Rows on Low Beach: 44 Vehicles



Admissions/Rentals:

- There are no admission fees for any of Nantucket's beaches
- Venders must be licensed by the Town of Nantucket or the controlling entity in order to sell, rent or lease merchandise, products, or sporting equipment at all beaches. All venders are subject to the restrictions imposed by the Governor, state Department of Public Health and local Board of Health relative to COVID-19 safety measures, including but not limited to customer lines and sanitation of all rented or leased equipment. The Town is not planning to issue any new licenses at any public beach for the summer of 2020 for any of these purposes.

Restrooms, Comfort Stations, Showers:

- Users shall abide by social distancing standards for bathroom lines and follow any established visual guidelines for maintaining a 6' distance in all restroom facilities.
- Public restrooms and porta-potties (located at remote beaches) are professionally cleaned by a contracted service provider multiple times per day.
- At beaches where there are public showers, 6' social distancing must also be maintained.
- Sanitization measures as recommended by Department of Public Health guidelines will be implemented.

Food Service, Concessions, and Vending:

- All Licensed Concession establishments must comply with and enforce all rules, orders and guidance of the Governor, state Department of Public Health and local Board of Health relative to COVID-19 safety measures, including but not limited to, reserved table seating only once allowed in Phase 2, social distancing between tables and customers in line, proper signage and all required Health protocols.
- Any expansion of seating area or licensed premises must be reviewed and approved by Town of Nantucket before implementation.
- Alcohol service will only be allowed on the approved licensed premises of Sandbar at Jetties Beach in accordance with all Emergency Orders set forth by the Governor and the state Alcoholic Beverages Control Commission.
- Mobile Food Units may operate in parking areas with prior approval and agreement with the Town or controlling entity with adherence to all COVID-19 related safety measures as with Concession establishments. No seating may be provided until allowed and under conditions set forth by the Governor. All units approved prior to the State of Emergency must seek additional approval in compliance with above standards. New permits for the summer 2020 are currently not being accepted.
- No additional permits for commercial activities such as catering for private events, weddings or special events on public beaches will be considered or issued until Phase 3 of the State's Reopening Plan or such time that public gatherings larger than 25 people or more are allowed. Public beaches must provide maximum space available to allow for safe social distancing for beach patrons.

Trash Disposal and Management:

- Most public beaches have trash receptacles and patrons are encouraged to utilize them. Other beaches require that patrons carry out what they bring in. Please help keep our beaches clean.

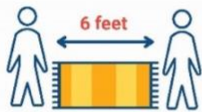
COVID-19 BEACH SAFETY RULES

Make your safety a priority and remember - WE ARE ALL IN THIS TOGETHER!



1

**IF YOU ARE FEELING SICK,
STAY HOME.**



2

GENERAL DISTANCING

Maintain at least 6' of distance from other beach-goers.



3

BEACH DISTANCING

Do not sit closer than 12' from your nearest neighbor in any direction.



4

WEAR A MASK

Masks are required when 6' of distance cannot be maintained.



5

**PREVENT THE SPREAD OF
GERMS**

Wash your hands and/or use hand sanitizer frequently.



6

BE RESPECTFUL

Avoid confrontation. Be kind, follow the rules and enjoy the beach!